

Product Introduction & Benefits



VOLKTEK's **NHL-2342NF** is a Triple play gateway for wireless VoIP Router. It enables service providers to increase service revenue by supporting features for business-class security and taking advantage of the converged voice and data communications over IP. It support common voice feature such as three way conference, call waiting, call transfer and much more. **NHL-2342NF** is designed for remote management, configuration, monitoring, software upgrades and new feature activation. TR-069 support ensures easy integration with existing management systems and real time customer messages. Besides, the **NHL-2342NF** is a 802.11b/g/n compliant Wireless Broadband Router with 4-port Fast Ethernet Switch, throughput is up to 80Mbps. With its advanced technology, it can support the faster data transmission rate than IEEE 802.11b/g devices.

Main Features:

Standards:

- IEEE: 802.3, 802.3u, 802.1q, 802.1p, 802.11 b/g, 802.11n

Interface:

- 4 x 10/100Base-T RJ-45 Ethernet LAN ports
- 1 x 100Base Fiber WAN ports (module changeable, SC/SFF)
- 1 x Restore Factory Defaults/Reboot button
- 1 x Wifi & WPS On/Off button

Router:

- TCP/IP
- 4 Remote node (1. Data, 2. IPTV, 3. VOIP, 4. TR-069)
- Support IGMP proxy
- NAT (includes multi-to-multi NAT) / SUA, 2048 NAT sessions
- NAT server (Port forwarding)
- Protocol and Generic Packet Filter
- Dynamic DNS
- DHCP client/server/relay
- DHCP option 60
- Support 16 IP Static route

Management:

- Web-based Configuration Tool
- Telnet Management
- Remote TFTP /HTTP Firmware Upgrade
- Auto provision(TFTP/FTP/HTTP/HTTPS)
- Support TR-069(TR-104)
- WLAN client MAC management table

Wireless:

- Compliant with IEEE 802.11n, 802.11g and 802.11b standards
- In the 2.4GHz band access point
- Up to 300Mbps wireless link rate
- 64 / 128 bits WEP supported for encryption
- Wireless Security with WPA-PSK /WPA2-PSK support

QoS:

- Supports 8 Software priority queuing*
- Port-based priority*
- Ingress Bandwidth Control with 16kbps configuration scale resolution
- Egress bandwidth control support 64kbps scale resolution

- UPnP support (IGD)*
- SNTP-Simple Network Time Protocol (RFC 2030)

Voice Codec:

- G.711a/μ
- G.729 a/b
- G.726 (16/24/32/40 kbps)
- G.723.1(6.3kbps, 5.3kbps)*
- G.722*

Voice Feature:

- Echo Cancellation: G.168
- Frame Loss Concealment
- VAD (Voice Activity Detection)
- Dynamic Jitter Buffer (Adaptive)
- DTMF Detection and Generation
- DTMF: In-Band and Out-of-Band (RFC 2833)
- Fax, Modem Detection and Pass-through (T.30)*
- Speed Dial Phonebook (20 entries)
- Flexible Dial Plan (RFC3525 section 7.1.14)*
- Multiple SIP Accounts / Phone Numbers
- Session Timers
- Caller ID Generation /Detection

- IEEE 802.1p and DSCP priority remarking capability*
- Country code
- SIP Extension
 - RFC 3262 Reliability of Provisional Response in SIP.
 - RFC 3265 SIP-Specific Event Notification
- NAT Traversal
 - STUN (RFC 3489)
 - Outbound Proxy

Phone Feature:

- Caller ID
- Message Waiting Indicator (RFC 3842)
- Call Waiting
- Call Hold
- Music on Hold*
- Flash Hook Timer
- Call Transferring (Blind and Attended Transfer)
- Do Not Disturb
- Three Way Conference (support two Tree way conference call at the same time)
- Speed Dialing

*Feature: future F/W up gradable

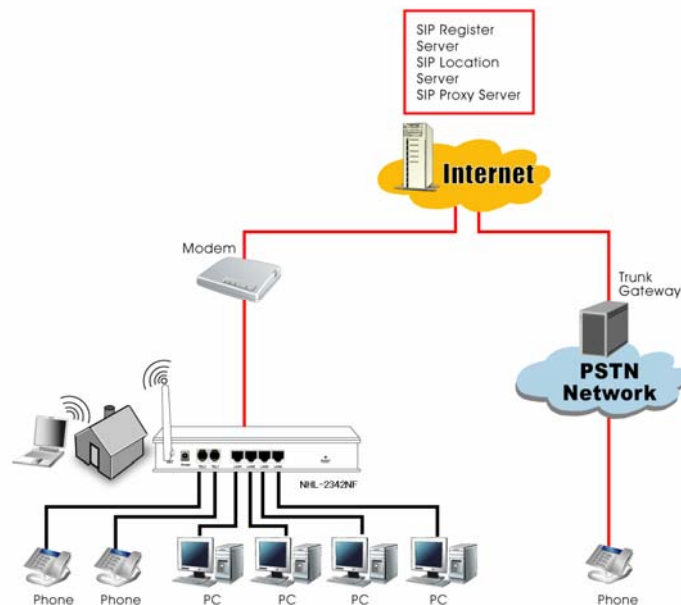


Specifications:

Standards:	IEEE 802.3	10Base-T	Power:	Power Input:	100 ~ 240VAC
-------------------	------------	----------	---------------	--------------	--------------

	IEEE 802.3u	100Base-TX			+12VDC
	IEEE 802.1p	Priority Queues	Temperature:	Operating:	0°C to 50°C
	IEEE 802.1q	VLAN Tagging		Storage:	-20°C to 65°C
	IEEE 802.11	Wireless	Humidity:	Operating:	10% to 80% RH
Ports:	4 x 10/100Base-T RJ-45 Ethernet LAN ports			Storage:	50% to 90% RH
	1 x 100Base Fiber WAN ports		Emissions:	FCC Part 15 of Class A & CE Approved	
	2 x RJ-11 FXS Phone ports		Safety:	EN 60950	
			Dimensions:	180 x 123 x 40 mm (D x W x H)	
VLANs:	Port-based and Tag-based (4000 VIDs)				
QoS:	Port-based, IEEE 802.1p tag, IPv4, MBM				

Applications:



Ordering Information:

NHL-2342NF :

802.11n Wireless 4 x 10/100 LAN, 2 x RJ-11 FXS VoIP, and 1 x 100FX WAN Fiber VoIP Gateway

NHL-2340NF :

802.11n Wireless 4 x 10/100 LAN, 1 x 100FX WAN Fiber Router

NHL-2340F :

4 x 10/100 Ethernet LAN, 1 x 100FX WAN Fiber Router

NHL-2342NT :

802.11n Wireless 4 x 10/100 LAN, 2 x RJ-11 FXS VoIP, and 1 x 10/100 RJ-45 WAN VoIP Gateway

NHL-2340NT :

802.11n Wireless 4 x 10/100 LAN, 1 x 10/100 WAN Router

NHL-2340T:

4 x 10/100 LAN, 1 x 10/100 WAN Router

Specifications are subject to change without prior notice. (August 2009) www.volktek.com